

Challenge:

Contamination on Construction Sites

How does oil and gasoline get into the ground?

- Leakage from oil sumps
- Leaking hoses and connections
- Refuelling of construction machinery on construction sites
- Oil changes on machinery
- Lubricating vehicle components
- Temporary storage of contaminated aggregates

What are the consequences?

- Cost intensive removal of contaminated soil
- Time lost from the construction process
- Expensive safeguards after working hours
- Supervision of operations required
- Increased insurance premiums

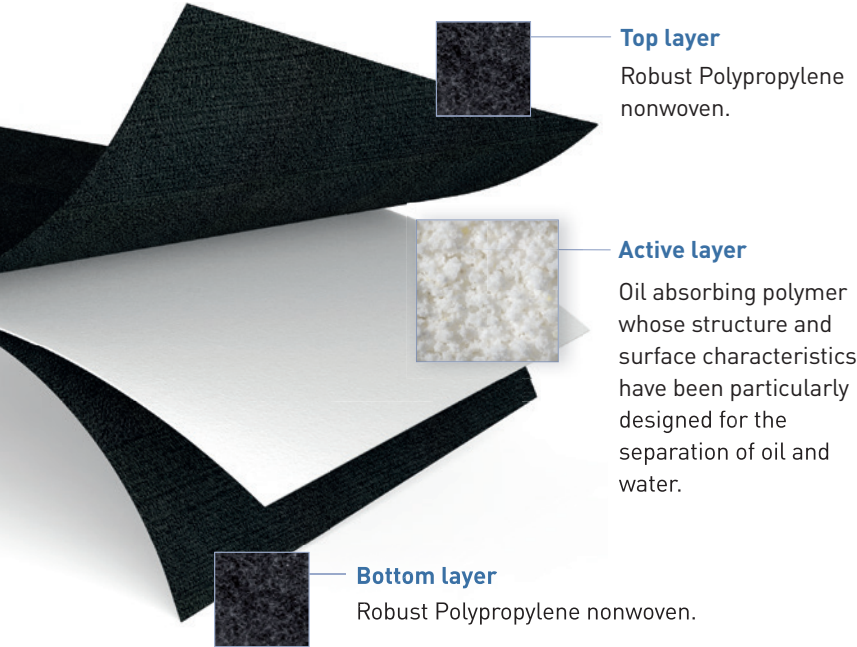
What measures are required to control water pollution on construction sites?

- Refuelling should only take place on sealed surfaces or outside the protection zone/construction site
- Construction vehicles must be parked outside protection zones at night
- Vehicles and machinery must be parked on sealed surfaces (asphalt, concrete or membrane) incl. slopes
- On-site supply of sufficient quantities of oil binders
- Immediate removal and disposal of contaminated soil

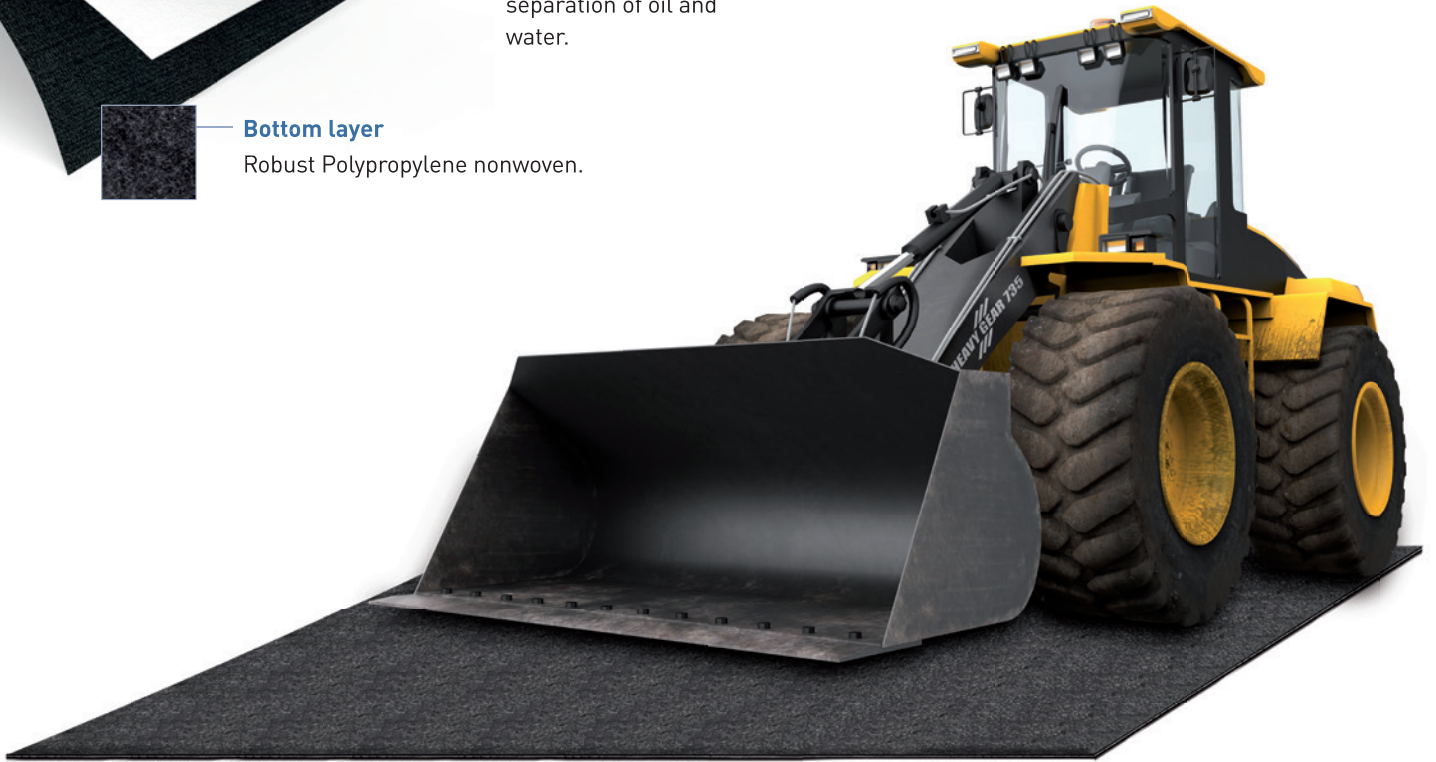


HUESKER solution:

Tektoseal® Active AS – Flexible Oil Absorption on Construction Sites



Tektoseal Active AS	
Function	Oil absorption
Contaminants	Oil, gasoline, kerosene etc.
Oil binding capacity per m ²	Tektoseal Active AS 200 : 3,0 ltr Tektoseal Active AS 400 : 7,0 ltr
Oil release under load	0% at 0.1 bar load
Certification	Official oil binder in Germany (LTWS)



Advantages on construction sites

- High mechanical strength, durable oil absorbent
- Easy to store on site in containers
- Complete absorption of oil, even on soft ground
- Easy to install and remove
- Easy to cut to size in situ
- Certified oil binder in Germany



Scan now!

More bundled information about our Tektoseal Active for petrochemicals and oils can be found here.

HUESKER Synthetic GmbH

Fabrikstraße 13-15,
48712 Gescher, Germany
Phone: +49 (0) 25 42 / 701 - 0
Fax: +49 (0) 25 42 / 701 - 499
Mail: info@HUESKER.de
Web: www.HUESKER.com

Follow us:



HUESKER
Ideen. Ingenieure. Innovationen.